



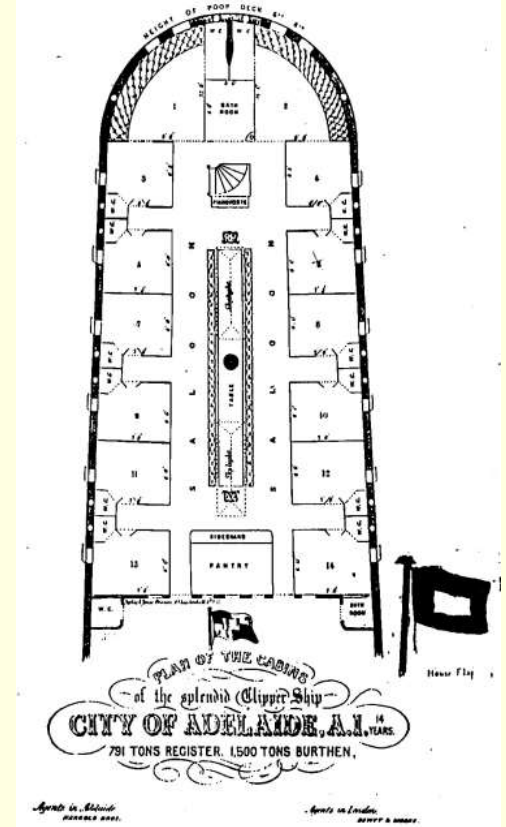
# Once there were many .....



# Today only one survives

**Built 1864, Sunderland, UK**

- **Length Overall:** 244 ft
- **Length (Hull):** 177 ft
- **Beam:** 33 ft
- **Draft:** 19 ft
- **Passengers:** 14 First Class Cabins  
270 Second Class Pax.



*She was the '747' of the 1860s*



*She was the '747' of the 1860s*

*City of Adelaide*

231ft : 70.4m

244ft : 74.4m





# Emmigrants to South Australia

**1/4 Million Australians can trace their heritage back to  
the *City of Adelaide***



Waite Family



John Cox Bray



George &  
Annie Wilcox



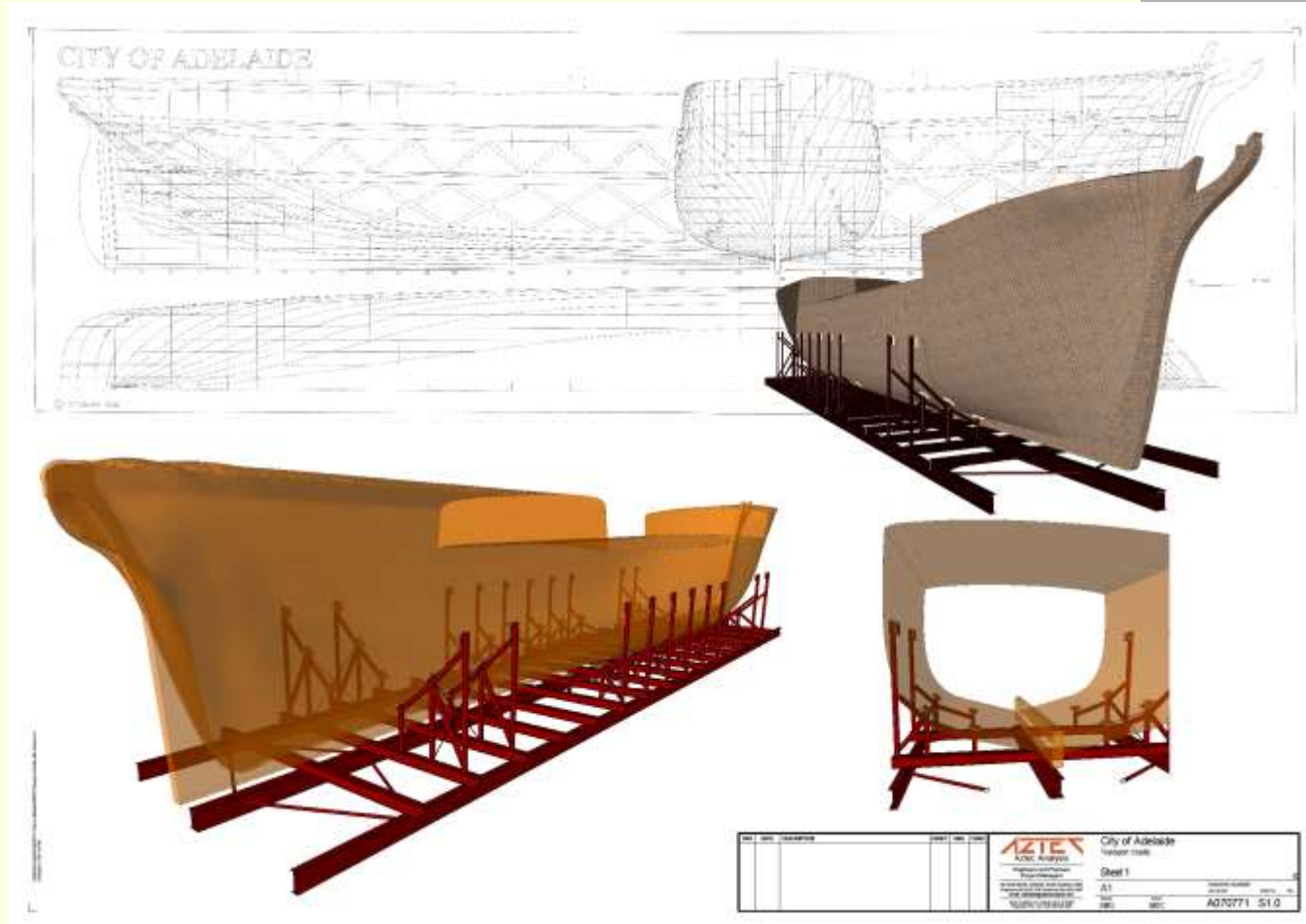
# Exports to UK







# Cradle designed to lift ship



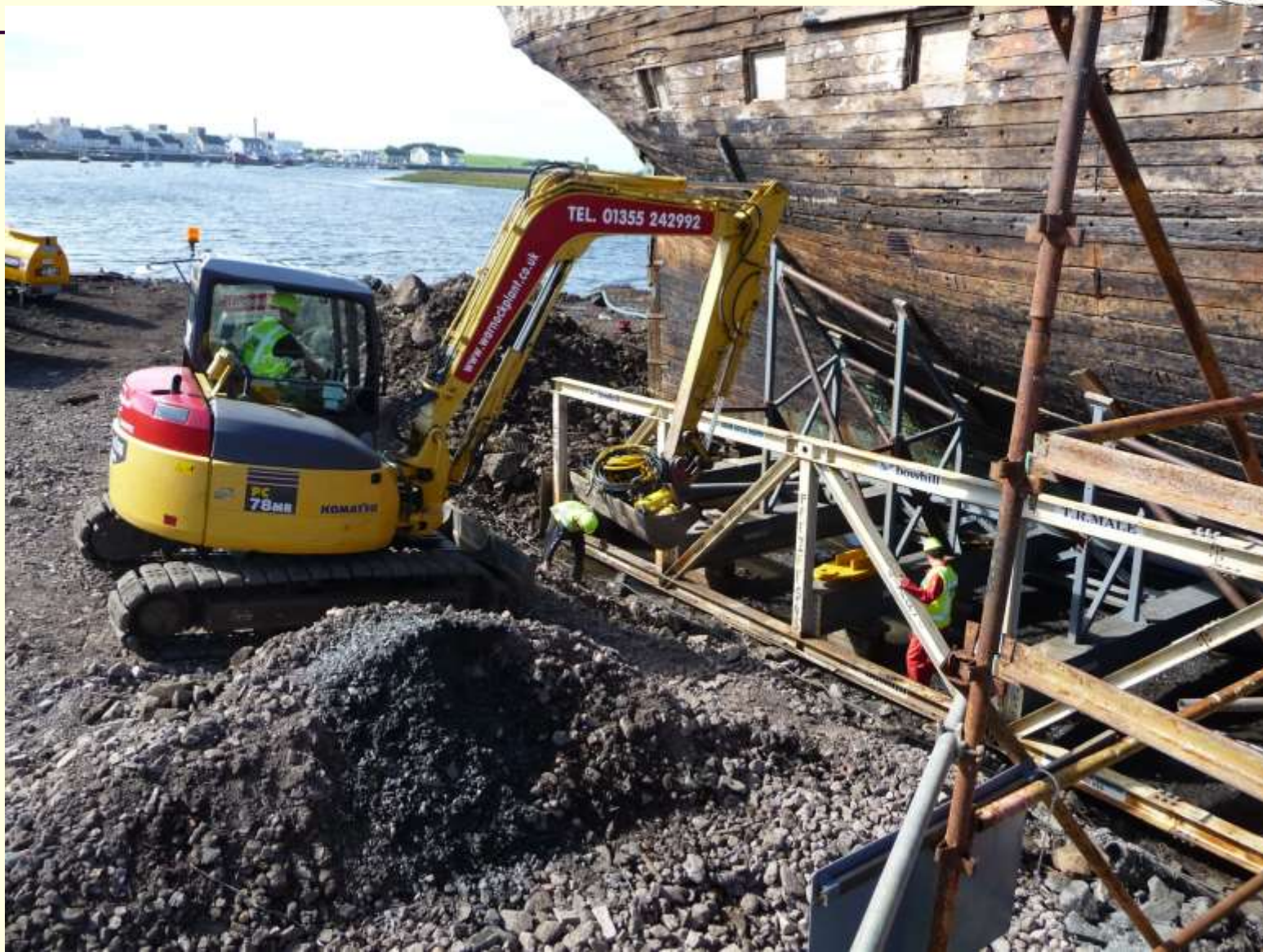


# We deliver – Scotland !



Aerial view 2012, Irvine, Scotland







## 2013 Irvine, Scotland



Ship jacked and  
wheels positioned  
under it in  
preparation for  
movement  
September 2013





## 2013 – being moved onto barge







2013



On barge, starting journey south



2013



Ceremony transferring ownership papers

# Glebe Primary School, Irvine, Scotland







2013



Scottish school children have written letters to South  
Australian students



# Greenwich, UK

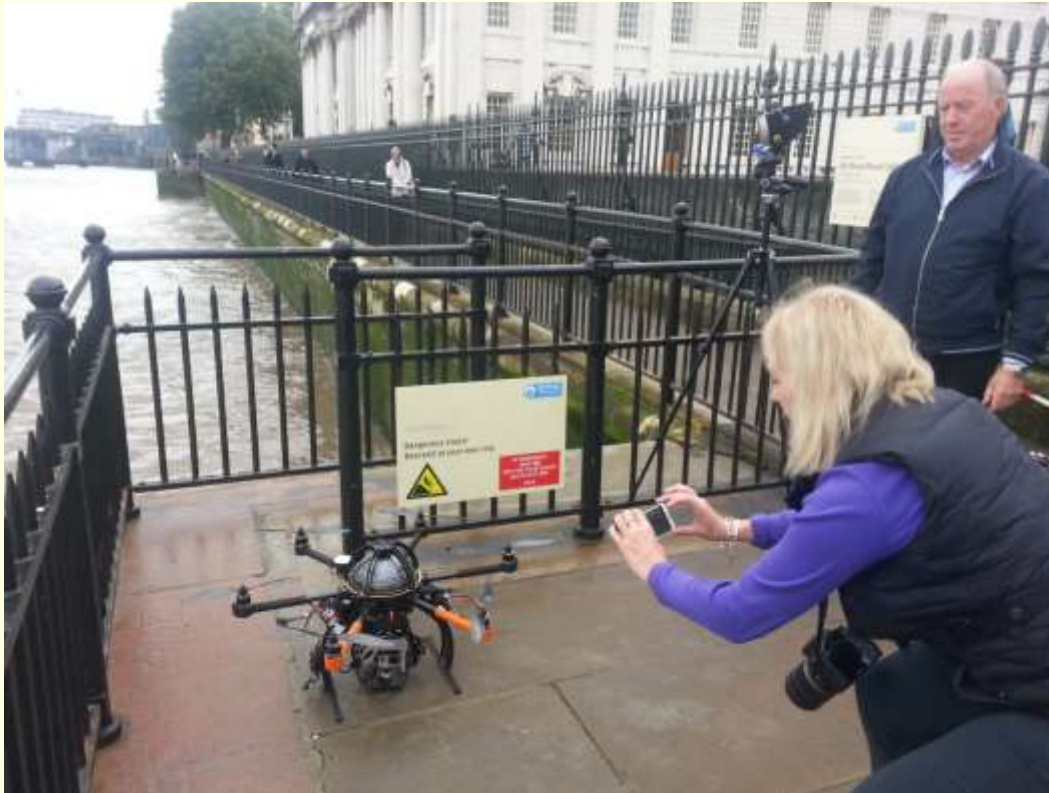
Save the Clipper 'City of Adelaide'







# Greenwich



TV7 from Adelaide, using mini camera on mini helicopter for aerial filming.





# Underway, ex Rotterdam





# Underway



Imagery ©2014 NASA, TerraMetrics - Source of Map



# Adelaide arrival, Feb. 2014

Save the Clipper 'City of Adelaide'



Transferring to barge





# Adelaide arrival



Into Dock One. Home at last !!!



# Blessing of the ship



# A tourism attraction already



Interim Display & Information Booth, Dock One





# Inside on middle deck





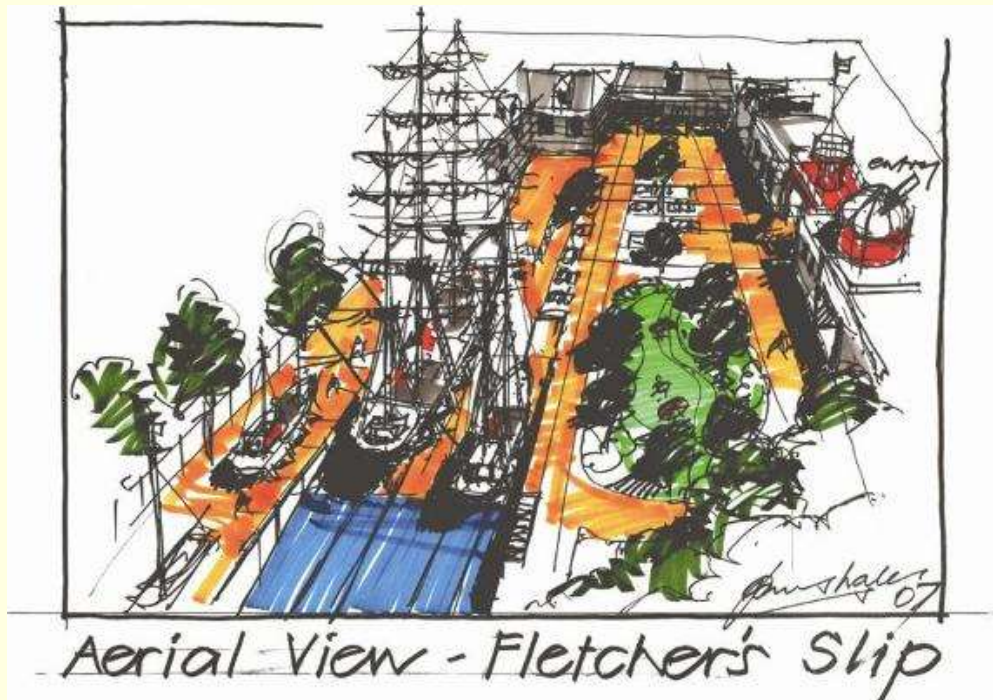
# Preservation treatment





# Our Vision

... to preserve the historic clipper ship *City of Adelaide* and display her in Port Adelaide, providing a centre-piece to the maritime heritage tourist precinct.







---

Thank you.

For further information visit  
[www.cityofadelaide.org.au](http://www.cityofadelaide.org.au)